

With EXELTOP™  
focus on your own performance

**GAIN PERFORMANCE**

Intuitive to use - ensures accurate and stable gas flow.

**SAVE TIME**

Ready to use due to the built-in regulator and on/off lever - quick connect available for all gases.

**SAVE MONEY**

No need to buy and maintain a separate regulator - regular checks by Air Liquide.

**SAVE GAS**

No gas loss thanks to the on/off lever - check content at a glance with the permanent pressure gauge.

**WORK SAFELY**

Emergency cut-off - Protected valve - No more exposure to high pressure gas flow.



**Contact**

Air Liquide  
Industrial Merchant  
75, quai d'Orsay  
75321 Paris Cedex 07  
FRANCE



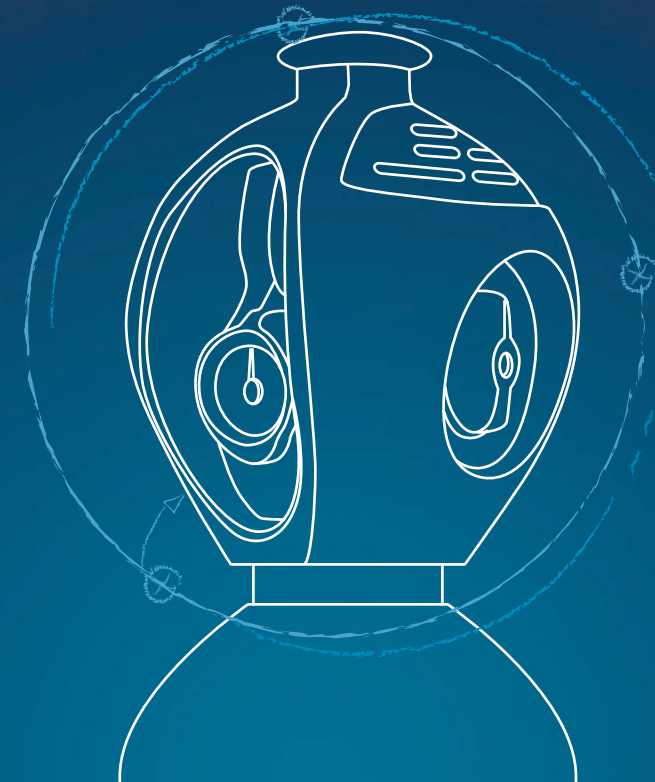
World leader in gases, technologies and services for Industry and Health, Air Liquide is present in 80 countries with close to 50,000 employees and serves more than 2 million customers and patients. Oxygen, nitrogen and hydrogen have been at the core of the company's activities since its creation in 1902. Air Liquide's ambition is to be the leader in its industry, delivering long-term performance and acting responsibly.



*Creative Oxygen*

**EXELTOP™**

Trust in performance



EXELTOP is Air Liquide's trademark. October 2013 - Design p500003

[www.airliquide.com](http://www.airliquide.com)

# EXELTOP™

## Ensure superior results



### Advanced two-stage built-in regulator

- No need to buy a separate regulator
- No more exposure to high pressure gas flow
- Accurate outlet pressure or flow rate
- Precise setting with a new graduated handwheel

### Quick connect system

- Available for all gases
- Simply connect the hose and get to work



### Ergonomic and shock-absorbing cap

- Easy handling
- Simple access to all functions
- Permanent, reliable protection for the valve and regulator

### Newly designed on/off lever

- Immediate gas cut-off
- On/off status at a glance

### Permanent content gauge

- At a glance content monitoring
- Get a reading even when flow is stopped



## Instructions

1 Connect the hose



2 Check that the graduated handwheel is at zero



3 Open the on/off lever



4 Set the outlet pressure or flow rate



**You are ready to go!**  
Check the instruction manual for detailed information